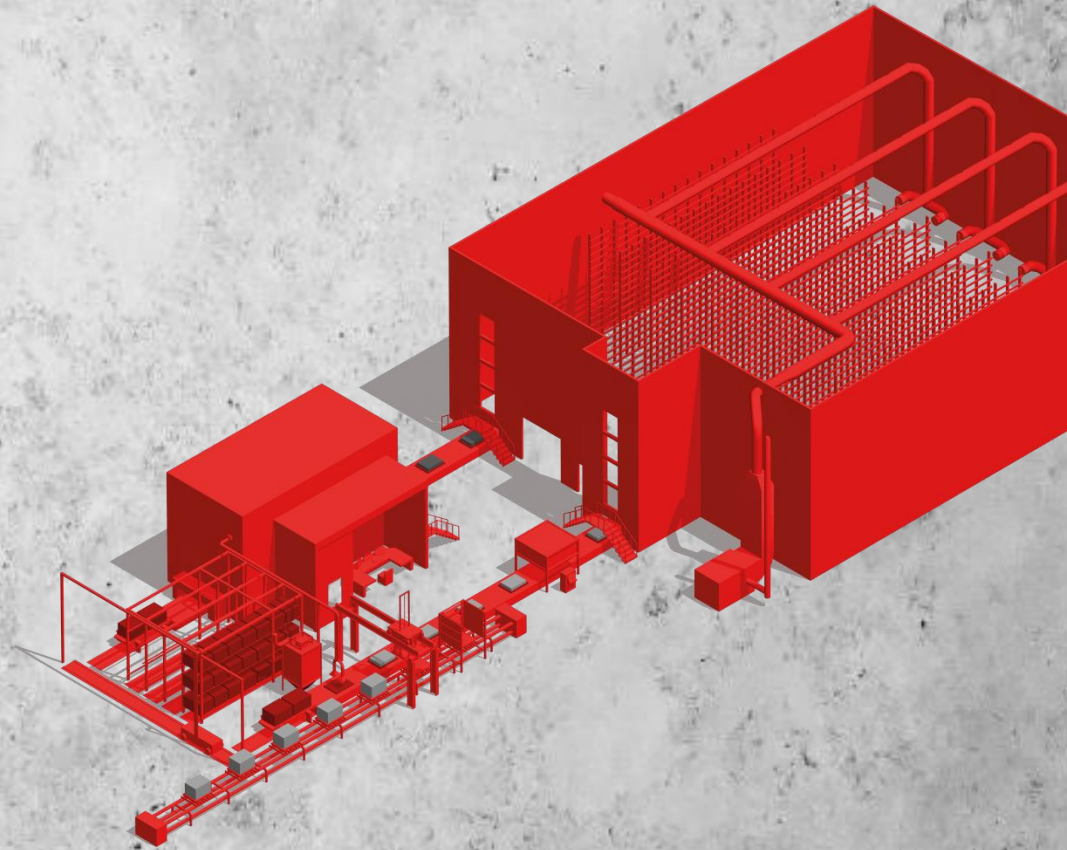


FOR BEST CONDITIONS.  
SINCE 1900.

**ROTHO**<sup>®</sup>

**YOUR  
PARTNER  
IN THE  
CONCRETE  
INDUSTRY**



**PART OF THE **ROBERT THOMAS** GROUP**

**FOR BEST CONDITIONS.  
SINCE 1900.**

**RÖTHO®**

# **THE ROBERT THOMAS GROUP**

**Founded in  
1897**



**2 BRANCHES:**

**RÖTHO®**

Concrete & ceramic industry

**THOMAS®**

Household industry

- Around 320 employees
- Production & Design:  
**100% MADE IN GERMANY**

FOR BEST CONDITIONS.  
SINCE 1900.



# THE ROBERT THOMAS GROUP

Early 1900

1926-1976

The 50ies

Cookware Solutions

Milk Cans  
Biggest producer worldwide

Washing Machines

Spin Dryers

Concrete Block Machines

**FOR BEST CONDITIONS.  
SINCE 1900.**



# **THE** **ROBERT THOMAS** **GROUP**

TODAY | High quality products in both industries



Intelligent systems for the  
concrete industry



Vacuum cleaners for the  
household goods industry



**FOR BEST CONDITIONS.  
SINCE 1900.**



**ROTHO  
Main Office**



**QUALITY  
MADE IN  
GERMANY**

**Production**



**FOR BEST CONDITIONS.  
SINCE 1900.**

**ROTHO  
PRODUCTS  
INCREASE  
YOUR  
PRODUCT  
QUALITY**



**Create a more  
efficient process**

**Reduce your  
curing time**

**Save production  
costs**

FOR BEST CONDITIONS.  
SINCE 1900.

# Curing Racks

For a fully-automated  
production process

Well-proofed design, fast and  
easy assembly, high durability  
for an increased output on  
blocks & pavers.

**ROTHO**<sup>®</sup>



**Indoor Curing Rack**  
Installation within existing building



**Clip-In Technology**  
Fast, safe, and easy assembly

THE ORIGINAL

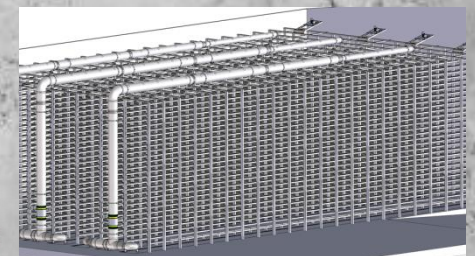
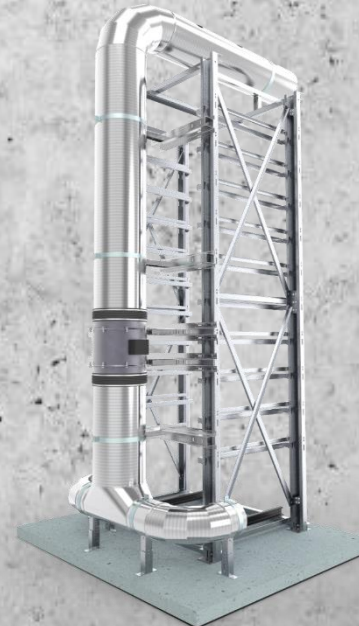
**FOR BEST CONDITIONS.  
SINCE 1900.**



# ProAir Circulation

Reduce your curing time  
without any additional heat or  
moisture supply - only by using  
the hydration process of your  
existing products.

- Uniform the distribution of  
the humidity & temperature
- Optional heating system  
available





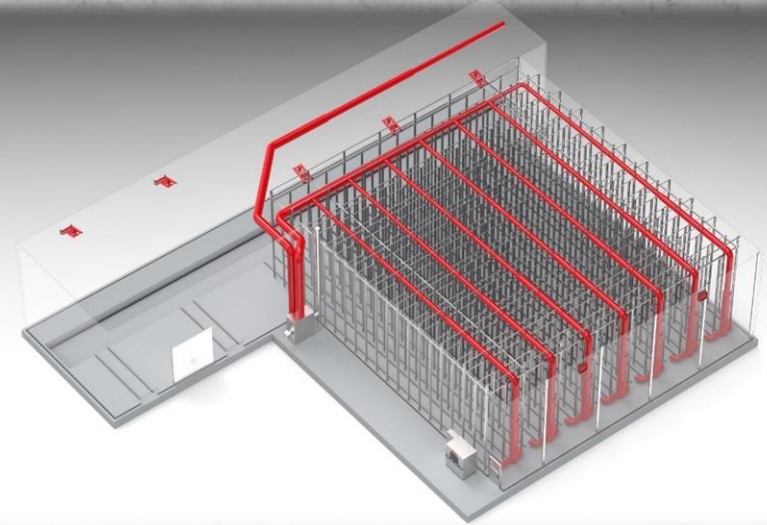
**FOR BEST CONDITIONS.  
SINCE 1900.**

# **Concrete Curing System ProCure**

**Production with a consistent  
curing climate - 365 days a year.**

- **Get resistant concrete surfaces**
- **Have uniformed and brighter colour results**
- **Reduce primary and secondary efflorescence**
- **Reach higher density concrete surfaces**
- **Lower your production costs by reducing the cement content**

**ROTHO®**



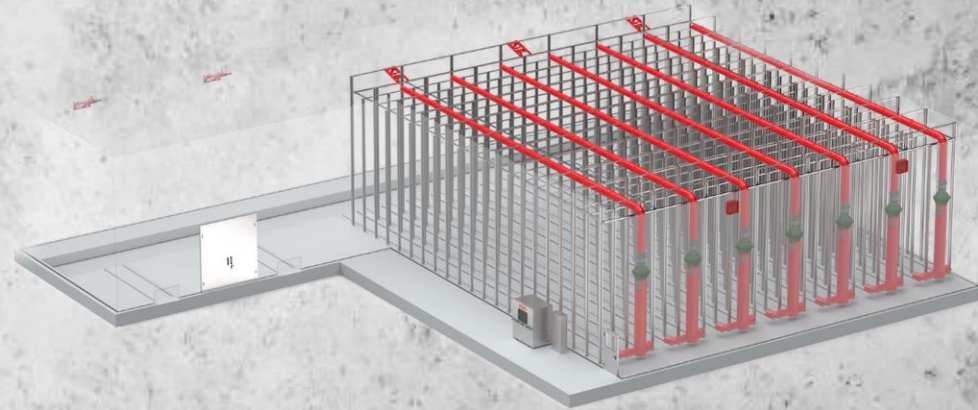
FOR BEST CONDITIONS.  
SINCE 1900.

# Innovative Green Energy Curing System

Alternative heating source by  
integrated hot-water heat  
exchangers.

- Excellent temperature control
- Cost effective system
- Connection to the customer's hot-water grid
- Production of hot-water by various green energy sources (solar power, geothermal heat, wind, etc.)

**ROTHO**<sup>®</sup>



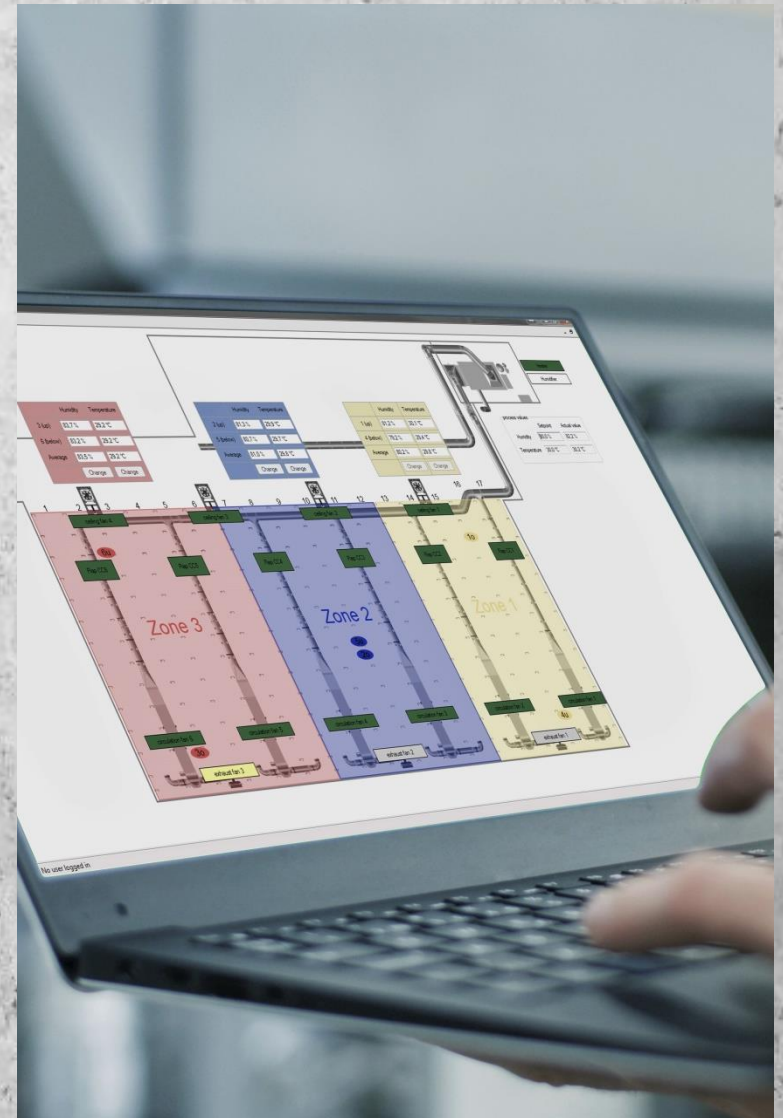
**FOR BEST CONDITIONS.  
SINCE 1900.**



# ROTHO Control

## Advantages:

- Easiest operation of complex processes
- Available as mobile Cloud and on premise software solution
- Worldwide online data access and ROTHO online support
- Delta T control
- Zone control within BIG Chambers
- Graded access permissions



**FOR BEST CONDITIONS.  
SINCE 1900.**

# Sound Protection Cabin

Designed for:

- Concrete block machines
- Control cabins for electrical / control equipment
- Individual and customized designs
- Quickly installed system (approximately 2 weeks)
- Reduce the production noise by 30-35 db(A)
- Protect your staff & production equipment

**ROTHO**<sup>®</sup>



**FOR BEST CONDITIONS.  
SINCE 1900.**

# The Assembly

**All connections designed as  
screw and bolt system  
= EASY & FAST installation**



**ROHO®**



**Global on-site installation teams**